



A RICE LAKE WEIGHING SYSTEMS COMPANY

GP4\_LX

## GP4 LX SERIES PRICE COMPUTING BENCH SCALES



Bench price computing scales with stainless steel structure and double waterproof keyboard. Suitable for labelling pre-packaged products.

**Scales and solutions for retail**



## FEATURES

- LCD alphanumeric double display (operator and customer side), white backlit.
- Double waterproof keyboard consisting of 36 multi-function membrane keys easily legible thanks to the special side pocket and 35 mechanical keys protected with adhesive screen printing. 8 operators.
- Thermal labeller with 8dots/mm resolution, ideal for labelling pre-packaged products.  
Print width up to 56mm.  
Max. roll width 63mm, external diameter 120mm (external diameter 203.2 mm in EVO version with external labeller).
- Easy roll replacement, by means of a removable door and an extractable trolley on guides to facilitate paper change.
- Stainless steel body, 420x390x180mm (WxWxH).
- 410x230mm (WxW) stainless steel plate.
- 230Vac power supply.
- Standard Ethernet port (optional USB connector).
- OIML R76 approved.

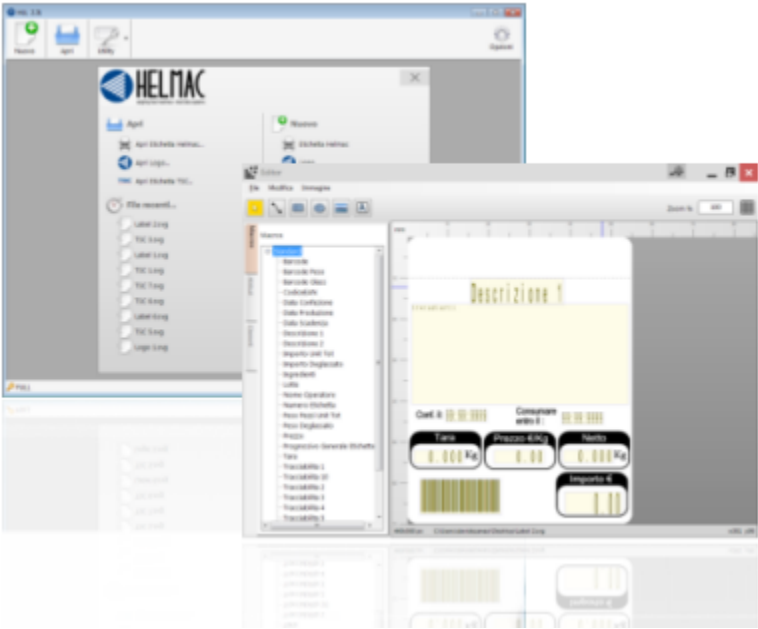
## FUNCTIONS

- Selectable operating mode: by receipt, price weight for labelling, single item or self-service.
- 8 with direct keys 20 totals.
- Archive 7000 PLU, 72 direct recall.
- 50 PLU groups.
- 5 active tares for operators.
- 999 ingredient lists up to 420 digits.
- 99 product traceability.
- 4 VAT rates, with separation function.
- 10 advertising messages.
- Queue eliminator.
- 8 types of payment.
- 3 programmable password levels.
- Storage and reopening of daily receipts.
- Starters, discounts, special offers, hourly sales reports, customer management.
- Total operators, PLUs, product groups, VAT rates and short and long term payment types.
- PLU priority working mode.
- Logo printing, EAN13 and EAN8 barcodes, dynamic QR Codes, total, lot, glazing.
- Logos management and firmware maintenance with HLL (Helmec Label Loader) software, downloadable from the site.

PRINTING FEATURES

Print dimensions			
	Roll width (mm)	Printing width (mm)	Diameter (mm)
Continuous roll	63	56	120
Integrated printer	63	56	120
External printer	118	108	203

HLL labeling software



DETAIL 1



DETAIL 2



DETAIL 3



---

YOUR  
**WORLDWIDE**  
PARTNER

**FOR RETAIL  
SOLUTIONS**

---



[www.helmac.com](http://www.helmac.com)



#### **HEAD OFFICE**

Via della Fisica, 18  
41042 Spezzano di Fiorano (MO) • Italy  
Tel.: +39 0536 070960

#### **WAREHOUSE**

Via della Fisica, 15  
41042 Spezzano di Fiorano (MO) • Italy

*SALES AND TECHNICAL ASSISTANCE SERVICE*

*All the specifications and images can be subject to variations and upgrades without prior notice.*